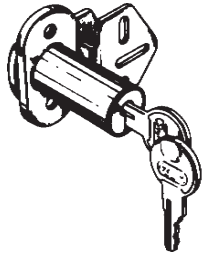
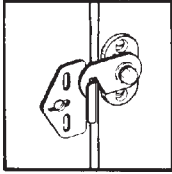


MISCELLANEOUS

Folding Door Lock

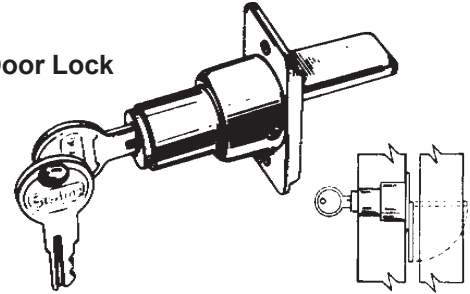


ST-1064 US-3

Positive locking action. Easy to mount. Only one 3/4" hole needed in one door. Strike is mounted on back side of opposite panel or on striking jamb. Key may be removed in either locked or unlocked position. Two keys per lock. Fits doors from 3/4" to 1-3/8" thick.

—STERLING—

Sliding Door Lock



US-3 Polished Brass
US-26D Satin Chrome

ST-1068 US-3, 26D

A truly quality wardrobe lock. Patented, positive-action design with lock cylinder geared directly to the tongue. One half turn of key locks or unlocks. Fits doors 3/4" to 1-3/4" thick. Two keys per lock.

CRASH STOP (CHAIN)

CAL-ROYAL



CR-HDCDV48 26D

Adjustable Chain Door Stop (20" to 30-1/2")
(Ives #115)

CAL-ROYAL

CR-ESBUL-50

US26D
UL Listed 8" Heavy Duty Surface Bolt. Steel Construction.
(Ives #453)
Bolt Throw: 1-3/16"
Length: 8"
Width: 1"
Projection: 1-5/8"



DOOR BOLTS



Stock No. **CR-SB873**
Length 3" Bolt
Finish US-15A, 26
Brass Surface Bolt
(Poly Packed w/screws)

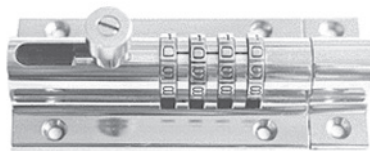
CR-ESBUL-12

US26D
UL Listed 12" Heavy Duty Surface Bolt. Steel Construction.
Bolt Throw: 1-3/16"
Length: 12"
Width: 1"
Projection: 1-5/8"



COMBI-BOLT

10,000 Possible Combinations



Stock No. **CB-2000 BLACK**
Black finish

- Great for gates and sheds.
- 10,000 possible combinations.
- Easily set your combination anytime.
- Permanent screw mounts.
- Heavy duty solid metal bolt & construction.
- Functionality/simplicity of sliding bolt while providing additional security.
- Ideal for outdoor use, totally rustproof.
- Easy to install in variety of applications.
- Easily converts from right hand to left hand doors.

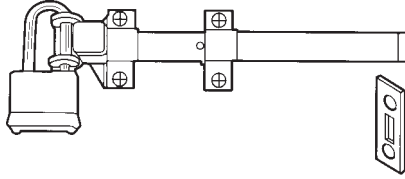
©ZIPF LOCK COMPANY

428 v1
(PL-42)

See page 446 for Cal Royal, Don Jo, Ives finish descriptions.
SUPER SPECIAL PRICING AVAILABLE ON ITEMS MARKED WITH ■ - SUPPLIES LIMITED - PLEASE INQUIRE.

MISCELLANEOUS

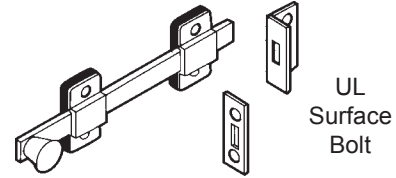
DOOR BOLTS



Stock No.	Finish	Size	Throw
DJ-1582	630	8"	1"

- All stainless steel construction.
- Padlock not included.

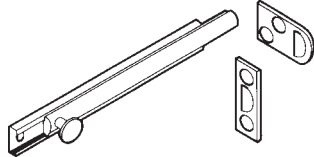
DON-JO



UL
Surface
Bolt

Stock No.	Finish	Size	ANSI
DJ-1580	626	8"	L84161

- Furnished with Rim and Mortise strikes.



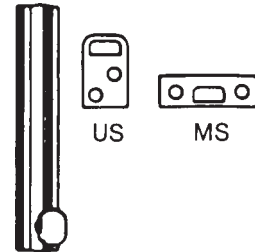
Stock No.	Finish	Size	ANSI
DJ-SB-4	605, 613, 620, 625, 626	4"	L04151
DJ-SB-6	605, 613, 619, 620, 625, 626	6"	L04151

- Furnished with Rim and Mortise strikes.
- 619, 620 finishes are discontinued, Call for closeout prices.

Decorative Surface Bolts

- Concealed screw design enhances appearance and security.
- Exceptional strength and durability provided by interlocking construction of heavy gauge track and rod.
- Permanent stop prevents rod disengagement from track.
- Tension spring holds bolt in desired position.
- Track assures smooth operation and interlocks with side edges of rod to eliminate marring.
- Decorative 5/8" diameter knob designed to facilitate bolt operation.
- Made from extruded brass.
- Available in 4" and 6" lengths.
- Packed with both Universal and Mortise Strikes.
- Meets design requirements of ANSI/BHMA A156.16.
- Dimensions: Throw: 7/16"; Projection: 3/4" Width: 11/16"

IVES



US

MS

Stock No. (Specify Finish & Length)

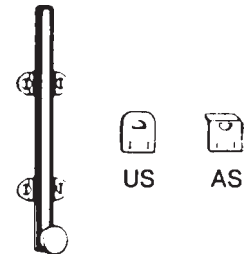
IV-40B * 4" 4" length
*Finishes: 3, 5, 10B, 15A, 26, 26D

IV-40B * 6" 6" length
*Finishes: 3, 5, 10B, 15, 15A, 26, 26D

Decorative Surface Bolts

- Features attractive 3/8" half-round rods and well-proportioned guides.
- Semi-concealed guides assure smooth operation and are positioned under the rod to eliminate marring the surface of the bolt.
- Stainless steel tension spring prevents rod disengagement from guide and provides permanent spring tension to hold bolt in desired position.
- Decorative 1/2" diameter knob designed to facilitate bolt operation.
- Made from solid brass or burnished steel.
- Available in 3", 4" and 6" lengths.
- Packed with both Universal and Angle Strikes.
- Meets design requirements of ANSI/BHMA A156.16.
- Dimensions: Throw: 3/4"; Projection: 3/4"; Half Round Rod: 3/8" Overall Width: 1-3/16"

IVES



US

AS

Stock No. (Specify Finish & Length)

IV-043B 4" or 6" length - Brass
Finishes: 3, 10B, 15, 15A, 26, 26D

IV-043F 3", 4", 6" length - Steel
Finishes: 3

**Cannot find what you need?
It simple ...
just give us a call...**



©ZIPF LOCK COMPANY

See page 446 for Cal Royal, Don Jo, Ives finish descriptions.

SUPER SPECIAL PRICING AVAILABLE ON ITEMS MARKED WITH ■ - SUPPLIES LIMITED - PLEASE INQUIRE.

429 v1
(PL-42)

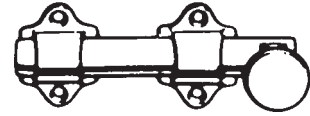
MISCELLANEOUS

DOOR BOLTS

Dutch Door Bolts

- Practical, rugged, attractive bolt for application on dutch doors as well as other areas.
- Chamfered rod end draws the two leaves of door tightly together.
- Sufficient tolerance provided in strike opening to allow for misalignment of door leaves and also prevents binding of bolt.
- Decorative 1" diameter knob designed to facilitate bolt operation.
- Made from solid brass.
- Packed with Standard Strike.
- Dimensions: Throw: 5/8"; Projection: 1-1/8"; Half Round Rod: 5/8"; Overall Width: 1-5/8"; Rod Length: 4-1/4"; Overall Length, including knob: 4-3/8"

IVES



Stock No. (Specify Finish & Length)
IV-054MB 6" length - Steel
Finishes: 10B, 15, 26D

Surface Bolt

- Surface Bolt has 1-3/16" throw for maximum security.
- Strong tension springs prevent creep.
- Ideal for all types of doors.
- Available 12" length. (8", 18" and 24" by special order)
- Unit packed with standard screws for added security.
- Unit packed with both a universal top strike (T) and a mortise bottom strike (B).
- Constructed of heavy duty steel.
- 8" and 12" Bolts are UL listed up to 3 hours when used on the inactive door of a pair up to 10' in height.
- Meets ANSI/BHMA A156.16 L84161
- Dimensions: Bar: 3/4" Wide x 1/4" Thick; Overall Width: 2-1/32"; Overall Projection: 1-5/16"
 Top Strike: 1-1/2" x 1-1/2" Angle, 3/16" Thick; Bottom Strike: 3-1/2" Long x 1-5/8" Wide x 1/8" Thick.

IVES



US



MS

Stock No.
IV-SB453-12-TB

Length: 12"
Finishes: 10B, 26D

Master Lock

DUAL FUNCTION DOOR SECURITY BAR

Adjusts to fit most Sliding and Hinged doors



For Sliding Doors

Stock No.
265D (White)

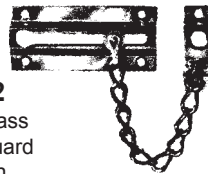
For Hinged Doors



- Non-marring yoke (removable for sliding doors)
- Designed to fit most doors, simple push button adjustment.
- High strength steel tube. 20-gauge.
- Portable. Collapsible, to fit most suitcases and garment bags.
- Pivoting ball joint for full contact on floor.
- Padded foot provides sure grip on most floors.
- Lifetime Guarantee.

DOOR CHAINS

CAL-ROYAL



CR-DG22
 US3 Solid Brass
 Chain Door Guard
 6-3/4" Chain

IVES



Stock No.
IV-481F Steel
Finishes: 3, 15, 716

Made from burnished wrought steel. Packed with sheet metal screws. Door plate: 3-3/8" x 1-7/16". Chain holder: 1-10/16" x 3/4". Chain length: 4-3/4".

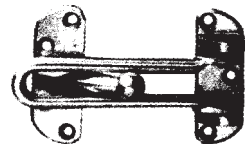
DOOR GUARDS

CAL-ROYAL

CR-BBDHG88

US3, 5, 26D

Zinc Diecast Swing Bar Door Guard with ball bearing
Limited supply of US-5. Call for closeout price.



Master Lock

ADJUSTABLE LOCK & ALARM FOR SLIDING WINDOWS & PATIO DOORS

ALARM



Stock No.
266D (White)

Pressure activated 110dB alarm.
 Fits larger sliding windows & patio doors.
 Excellent visual deterrent.

©ZIPF LOCK COMPANY

430 v2
 (PL-42)

See page 446 for Cal Royal, Don Jo, Ives finish descriptions.
 SUPER SPECIAL PRICING AVAILABLE ON ITEMS MARKED WITH ■ - SUPPLIES LIMITED - PLEASE INQUIRE.

MISCELLANEOUS

DOOR GUARDS



- Solid Bar Door Guard is for use on doors that are flush with frames.
- The solid bar, interlocking with the ball on the strike plate, permits the door to be slightly opened to allow viewing.
- The hinged bar allows the door guard to be positioned 180° away from the door when not in use.
- Edge guard, furnished with cast brass door guards, minimizes the chance for marring the door or frame.
- Strike plate is designed to prevent the solid bar from marring the inside of the door when in use.
- Easy installation.
- Meets ANSI/BHMA A156.16.
- Made from cast brass or cast aluminum.
- Packed with sheet metal screws.
- Dimensions of Cast Brass Door Guard: Strike Plate: 2-5/8" x 1-1/32"; Holder: 1-3/4" x 1-1/16"; Arm Length: 4-3/4"; Edge Guard: 1-1/8" x 1-1/32"
- Dimensions of Cast Aluminum Door Guard: Strike Plate: 2-1/2" x 7/8"; Holder: 2-1/2" x 15/16"; Arm Length: 3-13/16".



Stock No. (Specify Finish)

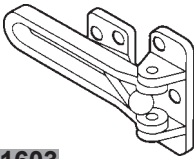
IV-482A Cast Aluminum

Finishes: 3, 5, 26, 26D

IV-482B Cast Brass

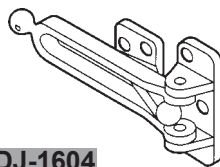
Finishes: 3, 10B, 15, 26, 26D

DON-JO



DJ-1603

Finishes: 605, 625, 626
Material: Aluminum. Edge protector included (1" x 1" x 1/2").
ANSI L33042.

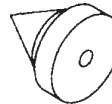


DJ-1604

Finishes: 605, 625, 626
Material: Brass. ANSI L13042.

DOOR SILENCERS

CAL-ROYAL



CR-DSM21

Rubber Door Silencer.
1/2" Dia. 11/16"
Length. For metal frames
(Sold in bags of 25)



CR-DSW85

Rubber Door Silencer.
3/8" x 3/4" Base, 3/4" length. For wood frames
(Sold in bags of 25)

DOOR VIEWERS

CAL-ROYAL



160° Door Viewer
1/2" Bore

CR-DV90 (plastic lens)
US3, 15



Door Viewer
9/16" Bore

CR-DV180 180° (plastic lens)
US3, 5, 10B, 15, 26

CR-ULDV200* 200° (glass lens)
US3, 26, 26D
*UL Listed

One-Way Wide Angle Viewer

- 190° Angle of View.
- Lens projects 1/4" from face of door.
- 4 optical glass lenses.
- For doors 1-3/8" to 2-1/8" thick.
- Solid brass body and barrel.
- Simple installation — only a 9/16" hole required.
- Conforms to ANSI/BHMA A156.16 L23172 and L23222.
- Suggested installation height: 60" from floor.

One-Way Viewer

- 120° Angle of View.
- **IV-700B** for doors 1-3/8" to 2-1/16" thick.
- **IV-701B** for doors 2-1/8" to 2-5/8" thick.
- **IV-U701B** for doors 2-1/8" to 2-5/8" thick.
- Secure, tamper-resistant.
- Solid brass body; glass lens.
- Simple installation — only a 1/2" hole required.
- Suggested installation height: 60" from floor.
- Conforms to ANSI/BHMA A156.16 L23173.

Stock No. (Specify Finish)

IV-701B

Finishes: 4, 10B, 26D



Stock No. (Specify Finish)

IV-698B

Finishes: 3, 26D, 716



Stock No. (Specify Finish)

IV-700B

Finishes: 4, 26D

Stock No. (Specify Finish)

IV-U701B

U.L. Listed 90 minute fire doors

Finishes: 4, 10B, 26D

©ZIPF LOCK COMPANY

See page 446 for Cal Royal, Don Jo, Ives finish descriptions.

SUPER SPECIAL PRICING AVAILABLE ON ITEMS MARKED WITH ■ - SUPPLIES LIMITED - PLEASE INQUIRE.

431 v1
(PL-42)

PADLOCKS

AMERICAN

Steel Hasps

The Steel-On-Steel Complement to Better Security



AJ-825



AJ-535



AJ-850



AJ-875



AJ-885

All Hardened Super-Security

Stock No.	Description	Length	Width
AJ-825	Straight bar, 7/16"	7-1/4"	1-5/8"
AJ-850	90° Angle bar, 7/16"	4-1/4"	1-5/8"
AJ-535	Off-center hole	5"	2"

Multi-Purpose Top Security Flex-O-Hasp
Heavy Wrought Steel

Stock No.	Description	Length	Width
AJ-875	Single Hinge	6-1/4"	1-3/4"
AJ-885	Double Hinge	7-3/4"	1-3/4"

Service Kits

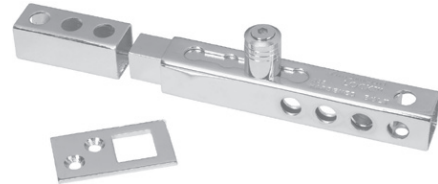
AJ-SK8

For servicing American Rekeyable Pin Tumbler locks.

AJ-TCR-3

For servicing American new Tubular Cam locks and padlocks.

Locking Bolt



No.

AJ-895

Description

3/4" solid hardened steel throw, fully adjustable from 3/4" to 2-3/8". Chrome plated.

Each Locking Bolt comes with instructions, mounting screws and hex wrench for installation.

AJ-801

This patent-pending steel hasp can be mounted directly to American A2500, A2010, A2001 hidden shackle padlocks found on page 459.

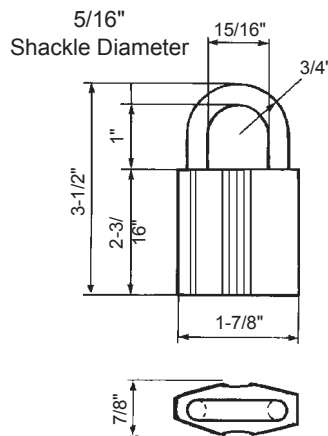


TWIN/6000 SERIES TWIN EXCLUSIVE SERIES PADLOCKS

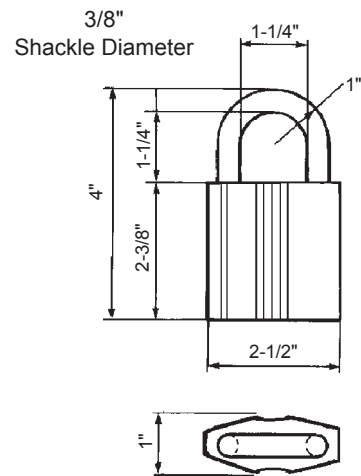
- Can be incorporated into any ASSA key system.
- All sub-assembled, no sidebar(SNS)
- For more information on ASSA, see previous page.
- Available in more restricted keyways, CALL FOR DETAILS.

KEY RETAINING PADLOCK

Rust-resistant case-hardened steel shackle. The locking mechanism has two case-hardened steel balls. No external rivets or screws. With weep holes for positive water drainage and protection from ice buildup.



Twin 6000 Item No.
65191B (No. 2)
65191LB 2-1/16" Extended Shackle



Twin 6000 Item No.
65391B (No. 3)

SUPER SPECIAL PRICING AVAILABLE ON ITEMS MARKED WITH ■ - SUPPLIES LIMITED - PLEASE INQUIRE.

465v2
(PL-44)