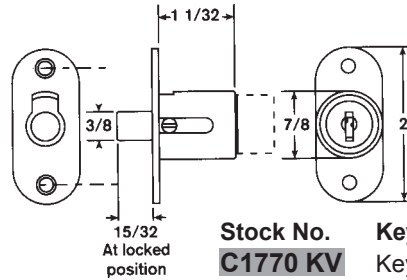


# SHOWCASE LOCKS



## SINGLE BITTED SLIDING DOOR LOCKS

- Five disc tumbler plug in 7/8" diameter.
- Die cast barrel.
- Keypull in locked and unlocked positions.
- Mounting plate is 5/64" x 7/8" x 2" with 1-1/2" between mounting hole centers.
- Utilizes a spring bolt which locks by pushing the cylinder in and released by turning the key 90° from locked (12:00) to unlocked (3:00) position.
- Two keys per lock.
- Standard Finish - Satin Chrome.

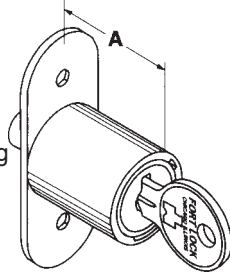


Stock No.	Keying
<b>C1770 KV</b>	Keyed Different*
<b>C1770 KA</b>	Keyed Alike #1289

\*KV indicates the majority of the quantity of locks will be keyed different. A lesser quantity will potentially be keyed alike to one or more key numbers. We can not guarantee that we can ship keyed DIFFERENT locks.

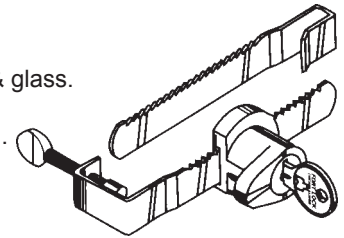


- Plunger Action, Wood Door Lock.
- 23000 Series Keyway. Disc tumbler.
- Nickel finish.
- 15/32" Bolt Throw.
- **"A" Dimension: 1-1/4".**
- Key pull at 12:00 only in unlocked position (3:00). Turn key back to 12:00 to remove key, then push plug in to lock.



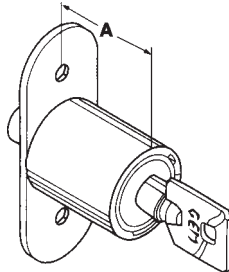
Stock No.	Keying
<b>SD-990 KD</b>	Keyed Different
<b>SD-990 KA</b>	Keyed Alike*
*Specify KA#: 217, 221, 224.	

- 2 one-way bars, wood & glass.
- 90° key turn to open.
- Key removable at 12:00.
- Removable cylinder for rekeying.
- Anti-spread housing.
- Nickel finish.
- Single bitted with universal keyway.



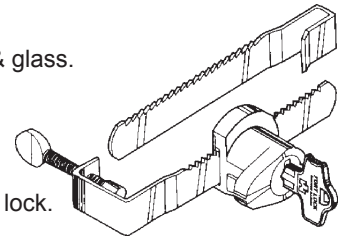
Stock No.	Keying
<b>MFWSG-23000 KD</b>	Keyed Different
<b>MFWSG-23000 KA</b>	Keyed Alike*
*Specify KA#: 217, 221, 224, 237, 238.	

- Plunger Action Wood Door Lock.
- Chrome finish.
- 15/32" bolt throw.
- 90° key turn, plunger slides out to lock.
- **"A" Dimension: 1-1/32".**
- Key pull at 12:00 only in unlocked position (3:00). Turn key back to 12:00 to remove key, then push plug in to lock.



Stock No.	Keying
<b>SD-1990 KA</b>	Keyed Alike*
*Specify KA#: 27380.	

- 2 one-way bars, wood & glass.
- Removable cylinder for rekeying.
- Anti-spread housing.
- Nickel finish.
- Double bitted 5 tumbler lock.



Stock No.	Keying
<b>MFWSG-29000 KD</b>	Keyed Different
<b>MFWSG-29000 KA</b>	Keyed Alike*
*Specify KA#: D3012, D3045, D3059, D3085.	

**We pride ourselves on our customer service.  
We urge you to test us today and every day!**

©ZIPF LOCK COMPANY

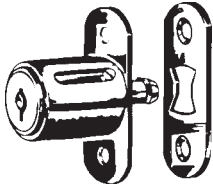
SUPER SPECIAL PRICING AVAILABLE ON ITEMS MARKED WITH ■ - SUPPLIES LIMITED - PLEASE INQUIRE.

**495**v1  
(PL-47)

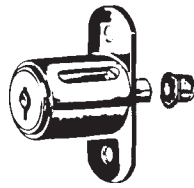
# SHOWCASE LOCKS



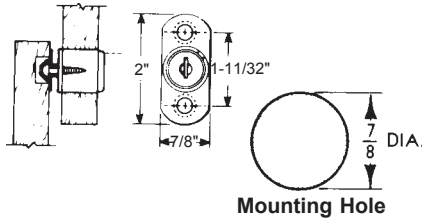
## Disc Tumbler Sliding Door Lock



NL-C8042



NL-C8043



**APPLICATION**—For wood sliding doors. Requires a 7/8" dia. hole in front door for cylinder.

**OPERATION**—**C8042** Push in cylinder, key turn engages bolt behind strike. Key removable in both locked and unlocked positions. **C8043** Pushing in cylinder locks doors. Key removable in both locked and unlocked positions.

**KEYING**—Will key together with all other disc tumbler locks using D8785 key blank. Available keyed alike or keyed different.

**KEY BLANK**—D8785.

**PACKAGING**—Each lock supplied with two keys, strike and mounting screws.

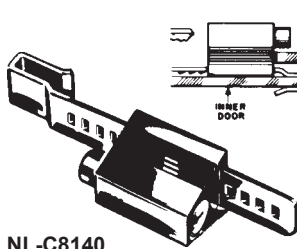
**FINISH**—26D-Dull Chrome

Part No.	Installation	Bolt Type	Cylinder Length	Bolt Travel	Keyed Alike Numbers Available
NL-C8042-26D	Sliding Doors	90° Turn Hook	7/8"	7/16"	C415A
NL-C8043-26D	Sliding Doors	Plunger	1"	7/16"	C346A, C413A, C451A

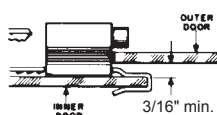
Available KD-Keyed Different or KA-Keyed Alike. *Specify KD or KA.*



## Pin Tumbler Sliding Door Locks



NL-C8140



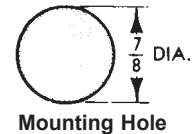
**APPLICATION**—NL-C8140 is for sliding glass doors. NL-C8142 and NL-C8143 are for wood sliding doors and require a 7/8" hole in the front door for cylinder.

**OPERATION**—Key removable in locked position only for NL-C8140. Key removable in both locked and unlocked positions for NL-C8142 and NL-C8143.

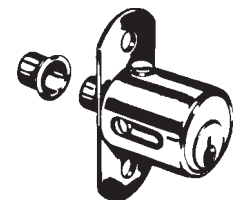
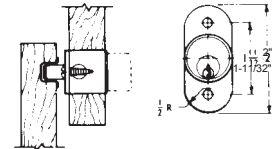
**KEYING**—Will key together with all other pin tumbler locks using D4291 key blank except NL-C8700 mail box locks.

**FINISH**— 4 Satin Brass  
26D Dull Chrome

**PACKAGING**—Supplied with two keys. NL-C8142 and NL-C8143 are furnished with strike and mounting screws.



Mounting Hole



NL-C8142  
NL-C8143

Part No.	Installation	Bolt Type	Cylinder Length	Bolt Travel	Keyed Alike Numbers Avail.
NL-C8140-26D	Plate Glass Sliding Doors	Internal Spring	—	—	103, 107
NL-C8142-4	Sliding Doors	Plunger	1-1/8"	7/16"	107
NL-C8142-26D	Sliding Doors	Plunger	1-1/8"	7/16"	101, 103, 107, 915
NL-C8143-4	Sliding Doors	Plunger	1-3/8"	7/16"	107
NL-C8143-26D	Sliding Doors	Plunger	1-3/8"	7/16"	107

Available KD-Keyed Different or KA-Keyed Alike. *Specify KD or KA.*

# SHOWCASE LOCKS

## 722 PLUNGER LOCK - IC CORE - SMALL FORMAT



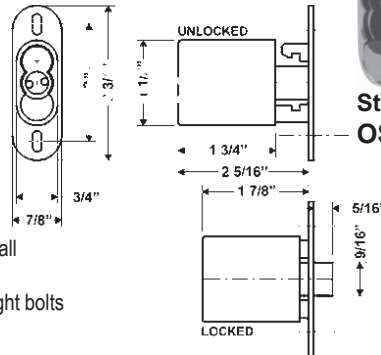
### GENERAL FEATURES—

Barrel length: 1-3/4"  
 Bolt throw: 1/2"  
 Retrofits: Best 2S, 2S-TBM  
 Max. door thickness: 1-7/8" Min. door thickness (TBM): 5/8"  
 Finish: US26

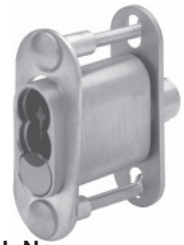
Body: Zinc die cast lock body

### KEYING INFORMATION—

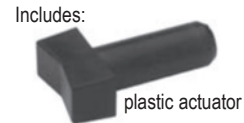
Cores: Not included. *Order seperately.*  
 Accepts: Best, Arrow, Falcon, KSP, Schlage SFIC or equivalent small format interchangeable cores  
 Includes: Matching strike, plastic actuator. TBM also includes through bolts plates and screws



Stock No.  
OS-722S-26D



Stock No.  
OS-722S-26D-TBM



## 722 RACHET LOCK - SMALL PIN - NATIONAL KEYWAY



### GENERAL FEATURES—

Rekeyable: Easily rekeyable via speedrelease cylinder release mechanism

Body: Zinc die cast lock body

Cylinder: Solid brass pin tumbler cylinder

Strap: Strap fits 1/4" material

Finish: 26D

### KEYING INFORMATION—

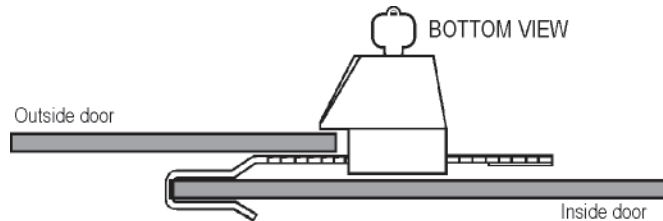
Keyway: National D4291 (4 pin)

Stock keying: KD/KA - 4 pin standard

Stock KA#: 915. *Other KA# by special order.*



Stock No.  
OS-329R-26D-KD  
OS-329R-26D-KA915



## 722 RACHET LOCK - IC CORE - SMALL FORMAT



### GENERAL FEATURES—

Retrofits: Best 3S Series

Uses: Wood or glass doors

Body: Zinc die cast

Strap: Steel

Finish: 26D

### KEYING INFORMATION—

Cores: Not included. *Order seperately.*

Accepts: Best, Arrow, Falcon, KSP, Schlage SFIC or equivalent small format interchangeable cores

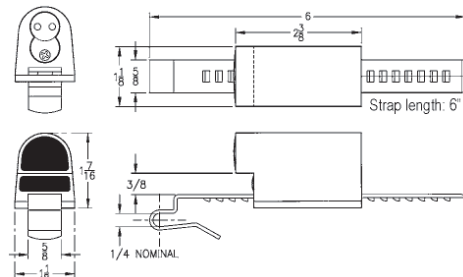
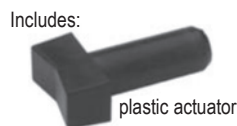
### Includes:

729RS-1 strap for 3/16" to 1/4" material thicknesses

725-PA plastic actuator



Stock No.  
OS-729R-26D



©ZIPF LOCK COMPANY