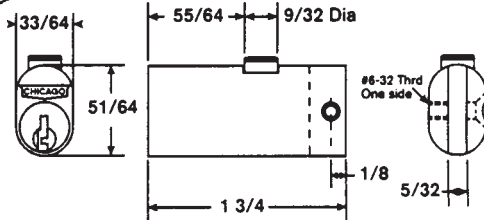
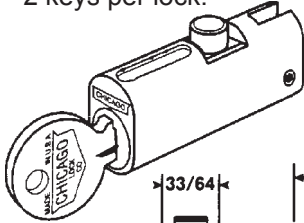
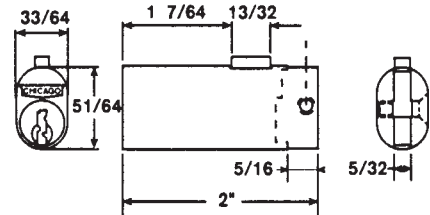
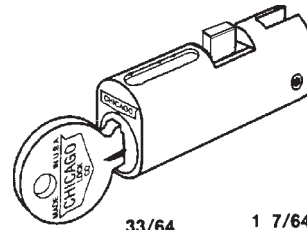


FILE CABINET LOCKS

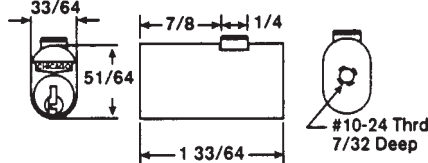
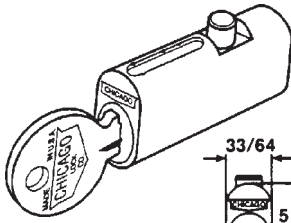
- Four Pin tumbler plug.
- Satin Chrome finish.
- Die Cast barrel with die cast bolt.
- 5002LP has rectangular bolt.
- Other models have round bolt.
- 2 keys per lock.



Stock No. **Description**
C5001LP KV Keyed Different*
C5001LP KA Keyed Alike: **SPECIFY KA#**
1x03, 1x04, 1x20, 3x5



Stock No. **Description**
C5002LP KV Keyed Different*
C5002LP KA Keyed Alike: **SPECIFY KA#**
1x04, 1x20, 2x01, 2x02, 3x5



Stock No. **Description**
CEXP-19DC KV Keyed Different*
CEXP-19DC KA Keyed Alike: **5x75**

*KV indicates the majority of the quantity of locks will be keyed different. A lesser quantity will potentially be keyed alike to one or more key numbers. We can not guarantee that we can ship keyed DIFFERENT locks.

PIN TUMBLER FILE CABINET LOCK



APPLICATION—Used internally on filing cabinets to gang lock drawers.

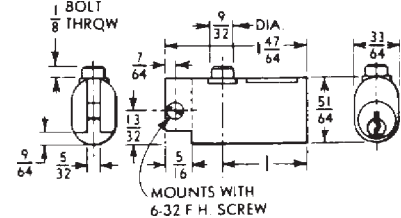
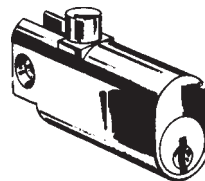
OPERATION—Key removable in locked position only.

KEYING—Will key together with all other pin tumbler locks using D4291 key blank except NL-C8700 series mail box locks. Available keyed different (**KD**) or keyed alike (**KA# 107**).

KEY BLANK—D4291.

PACKAGING—Supplied with two keys.

FINISHES—26D-Dull Chrome.



NL-C8150-26D

Stock #	Installation	Bolt Type	Cylinder Length	Bolt Travel	Keyed Alike Numbers Available
NL-C8150-26D	File Cabinet	Spring	—	1/8"	107, 915

Available **KD**-Keyed Different or **KA**-Keyed Alike. **Specify KD or KA**

©ZIPF LOCK COMPANY

SUPER SPECIAL PRICING AVAILABLE ON ITEMS MARKED WITH ■ - SUPPLIES LIMITED - PLEASE INQUIRE.

355_{v2}
(PL-29)

FILE CABINET LOCKS

DISC TUMBLER FILE CABINET LOCK

APPLICATION—Used internally on filing cabinets to gang lock drawers.

OPERATION—Key removable in locked position only.

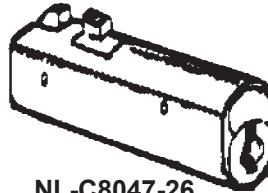
KEYING—Keyed only to "Pundra" keyway.

KEY BLANK—D8776.

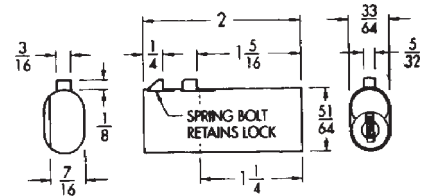
PACKAGING—Supplied with two keys.

FINISHES—26-Bright Chrome.

CompX
NATIONAL



NL-C8047-26



Replacement for "Shaw Walker"

Stock #	Installation	Bolt Type	Cylinder Length	Bolt Travel	Keyed Alike Numbers Available
NL-C8047-26	File Cabinet	Spring	—	1/8"	P141A

Available **KD**-Keyed Different or **KA**-Keyed Alike. *Specify KD or KA*

REMEMBER: If you don't see what you need,
please contact us with your requirements.