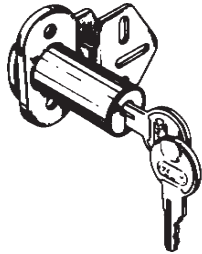
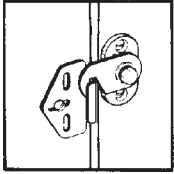


# MISCELLANEOUS

## Folding Door Lock



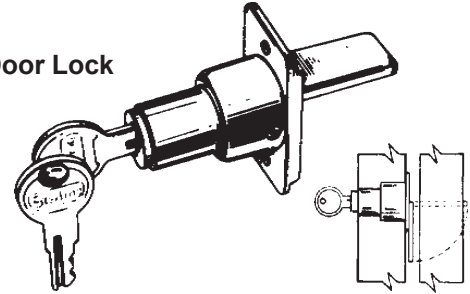
### ST-1064 US-3

Positive locking action. Easy to mount. Only one 3/4" hole needed in one door. Strike is mounted on back side of opposite panel or on striking jamb. Key may be removed in either locked or unlocked position. Two keys per lock. Fits doors from 3/4" to 1-3/8" thick.

## —STERLING—

## Sliding Door Lock

US-3 Polished Brass  
US-26D Satin Chrome



### ST-1068 US-3, 26D

A truly quality wardrobe lock. Patented, positive-action design with lock cylinder geared directly to the tongue. One half turn of key locks or unlocks. Fits doors 3/4" to 1-3/4" thick. Two keys per lock.

## CRASH STOP (CHAIN)

# CAL-ROYAL



### CR-HDCDV48 26D

Adjustable Chain Door Stop (20" to 30-1/2")  
(Ives #115)

# CAL-ROYAL

### CR-ESBUL-50

US26D  
UL Listed 8" Heavy Duty Surface Bolt. Steel Construction.  
(Ives #453)  
Bolt Throw: 1-3/16"  
Length: 8"  
Width: 1"  
Projection: 1-5/8"



## DOOR BOLTS



Stock No. **CR-SB873** Length 3" Bolt Finish US-15A, 26  
Brass Surface Bolt (Poly Packed w/screws)

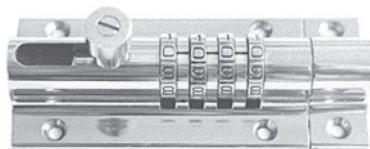
### CR-ESBUL-12

US26D  
UL Listed 12" Heavy Duty Surface Bolt. Steel Construction.  
Bolt Throw: 1-3/16"  
Length: 12"  
Width: 1"  
Projection: 1-5/8"



## COMBI-BOLT

**10,000 Possible Combinations**



Stock No. **CB-2000 BLACK**  
Black finish

- Great for gates and sheds.
- 10,000 possible combinations.
- Easily set your combination anytime.
- Permanent screw mounts.
- Heavy duty solid metal bolt & construction.
- Functionality/simplicity of sliding bolt while providing additional security.
- Ideal for outdoor use, totally rustproof.
- Easy to install in variety of applications.
- Easily converts from right hand to left hand doors.

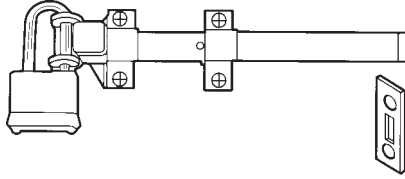
©ZIPF LOCK COMPANY

428 v1  
(PL-42)

See page 446 for Cal Royal, Don Jo, Ives finish descriptions.  
SUPER SPECIAL PRICING AVAILABLE ON ITEMS MARKED WITH ■ - SUPPLIES LIMITED - PLEASE INQUIRE.

# MISCELLANEOUS

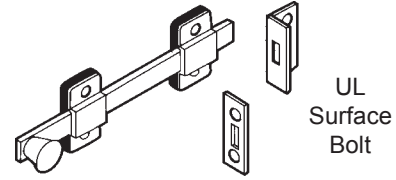
## DOOR BOLTS



Stock No.	Finish	Size	Throw
<b>DJ-1582</b>	630	8"	1"

- All stainless steel construction.
- Padlock not included.

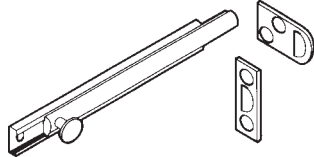
# DON-JO



UL  
Surface  
Bolt

Stock No.	Finish	Size	ANSI
<b>DJ-1580</b>	626	8"	L84161

- Furnished with Rim and Mortise strikes.



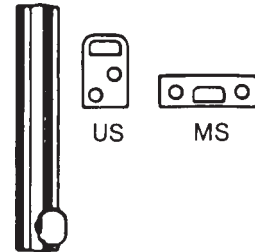
Stock No.	Finish	Size	ANSI
<b>DJ-SB-4</b>	605, 613, 620, 625, 626	4"	L04151
<b>DJ-SB-6</b>	605, 613, 619, 620, 625, 626	6"	L04151

- Furnished with Rim and Mortise strikes.
- **619, 620 finishes are discontinued, Call for closeout prices.**

### Decorative Surface Bolts

- Concealed screw design enhances appearance and security.
- Exceptional strength and durability provided by interlocking construction of heavy gauge track and rod.
- Permanent stop prevents rod disengagement from track.
- Tension spring holds bolt in desired position.
- Track assures smooth operation and interlocks with side edges of rod to eliminate marring.
- Decorative 5/8" diameter knob designed to facilitate bolt operation.
- Made from extruded brass.
- Available in 4" and 6" lengths.
- Packed with both Universal and Mortise Strikes.
- Meets design requirements of ANSI/BHMA A156.16.
- Dimensions: Throw: 7/16"; Projection: 3/4" Width: 11/16"

## IVES



US

MS

### Stock No. (Specify Finish & Length)

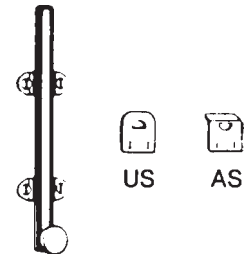
**IV-40B \* 4"** 4" length  
\*Finishes: 3, 5, 10B, 15A, 26, 26D

**IV-40B \* 6"** 6" length  
\*Finishes: 3, 5, 10B, 15, 15A, 26, 26D

### Decorative Surface Bolts

- Features attractive 3/8" half-round rods and well-proportioned guides.
- Semi-concealed guides assure smooth operation and are positioned under the rod to eliminate marring the surface of the bolt.
- Stainless steel tension spring prevents rod disengagement from guide and provides permanent spring tension to hold bolt in desired position.
- Decorative 1/2" diameter knob designed to facilitate bolt operation.
- Made from solid brass or burnished steel.
- Available in 3", 4" and 6" lengths.
- Packed with both Universal and Angle Strikes.
- Meets design requirements of ANSI/BHMA A156.16.
- Dimensions: Throw: 3/4"; Projection: 3/4"; Half Round Rod: 3/8" Overall Width: 1-3/16".

## IVES



US

AS

### Stock No. (Specify Finish & Length)

**IV-043B** 4" or 6" length - Brass  
Finishes: 3, 10B, 15, 15A, 26, 26D

**IV-043F** 3", 4", 6" length - Steel  
Finishes: 3

**Cannot find what you need?  
It simple ...  
just give us a call...**



©ZIPF LOCK COMPANY

See page 446 for Cal Royal, Don Jo, Ives finish descriptions.

SUPER SPECIAL PRICING AVAILABLE ON ITEMS MARKED WITH ■ - SUPPLIES LIMITED - PLEASE INQUIRE.

**429** v1  
**(PL-42)**

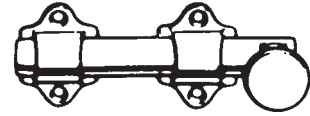
# MISCELLANEOUS

## DOOR BOLTS

### Dutch Door Bolts

- Practical, rugged, attractive bolt for application on dutch doors as well as other areas.
- Chamfered rod end draws the two leaves of door tightly together.
- Sufficient tolerance provided in strike opening to allow for misalignment of door leaves and also prevents binding of bolt.
- Decorative 1" diameter knob designed to facilitate bolt operation.
- Made from solid brass.
- Packed with Standard Strike.
- Dimensions: Throw: 5/8"; Projection: 1-1/8"; Half Round Rod: 5/8"; Overall Width: 1-5/8"; Rod Length: 4-1/4"; Overall Length, including knob: 4-3/8"

**IVES**



**Stock No. (Specify Finish & Length)**  
**IV-054MB** 6" length - Steel  
**Finishes:** 10B, 15, 26D

### Surface Bolt

- Surface Bolt has 1-3/16" throw for maximum security.
- Strong tension springs prevent creep.
- Ideal for all types of doors.
- Available 12" length. (8", 18" and 24" by special order)
- Unit packed with standard screws for added security.
- Unit packed with both a universal top strike (T) and a mortise bottom strike (B).
- Constructed of heavy duty steel.
- 8" and 12" Bolts are UL listed up to 3 hours when used on the inactive door of a pair up to 10' in height.
- Meets ANSI/BHMA A156.16 L84161
- Dimensions: Bar: 3/4" Wide x 1/4" Thick; Overall Width: 2-1/32"; Overall Projection: 1-5/16"  
 Top Strike: 1-1/2" x 1-1/2" Angle, 3/16" Thick; Bottom Strike: 3-1/2" Long x 1-5/8" Wide x 1/8" Thick.

**IVES**



US



MS

**Stock No.**  
**IV-SB453-12-TB**

Length: 12"  
**Finishes:** 10B, 26D

**Master Lock**

## DUAL FUNCTION DOOR SECURITY BAR

Adjusts to fit most Sliding and Hinged doors



For Sliding Doors

**Stock No.**  
**265D (White)**

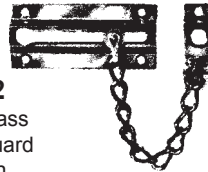
For Hinged Doors



- Non-marring yoke (removable for sliding doors)
- Designed to fit most doors, simple push button adjustment.
- High strength steel tube. 20-gauge.
- Portable. Collapsible, to fit most suitcases and garment bags.
- Pivoting ball joint for full contact on floor.
- Padded foot provides sure grip on most floors.
- Lifetime Guarantee.

## DOOR CHAINS

### CAL-ROYAL



**CR-DG22**  
 US3 Solid Brass  
 Chain Door Guard  
 6-3/4" Chain

**IVES**



**Stock No.**  
**IV-481F** Steel  
**Finishes:** 3, 15, 716

Made from burnished wrought steel. Packed with sheet metal screws. Door plate: 3-3/8" x 1-7/16". Chain holder: 1-10/16" x 3/4". Chain length: 4-3/4".

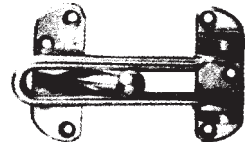
## DOOR GUARDS

### CAL-ROYAL

#### CR-BBDHG88

US3, 5, 26D

Zinc Diecast Swing Bar Door Guard with ball bearing  
**Limited supply of US-5. Call for closeout price.**



**Master Lock**

## ADJUSTABLE LOCK & ALARM FOR SLIDING WINDOWS & PATIO DOORS

### ALARM



**Stock No.**  
**266D (White)**

Pressure activated 110dB alarm.  
 Fits larger sliding windows & patio doors.  
 Excellent visual deterrent.

©ZIPF LOCK COMPANY

**430** v2  
 (PL-42)

See page 446 for Cal Royal, Don Jo, Ives finish descriptions.  
 SUPER SPECIAL PRICING AVAILABLE ON ITEMS MARKED WITH ■ - SUPPLIES LIMITED - PLEASE INQUIRE.

# PADLOCKS

## AMERICAN

### Steel Hasps

The Steel-On-Steel Complement to Better Security



AJ-825



AJ-535



AJ-850



AJ-875



AJ-885

All Hardened Super-Security

Stock No.	Description	Length	Width
AJ-825	Straight bar, 7/16"	7-1/4"	1-5/8"
AJ-850	90° Angle bar, 7/16"	4-1/4"	1-5/8"
AJ-535	Off-center hole	5"	2"

Multi-Purpose Top Security Flex-O-Hasp  
Heavy Wrought Steel

Stock No.	Description	Length	Width
AJ-875	Single Hinge	6-1/4"	1-3/4"
AJ-885	Double Hinge	7-3/4"	1-3/4"

### Service Kits

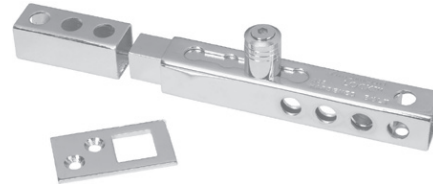
#### AJ-SK8

For servicing American Rekeyable Pin Tumbler locks.

#### AJ-TCR-3

For servicing American new Tubular Cam locks and padlocks.

### Locking Bolt



No.

#### AJ-895

Description

3/4" solid hardened steel throw, fully adjustable from 3/4" to 2-3/8". Chrome plated.

Each Locking Bolt comes with instructions, mounting screws and hex wrench for installation.

#### AJ-801

This patent-pending steel hasp can be mounted directly to American A2500, A2010, A2001 hidden shackle padlocks found on page 459.

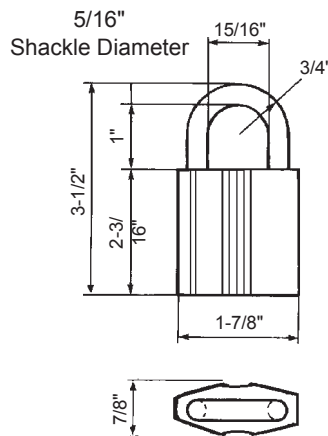


### TWIN/6000 SERIES TWIN EXCLUSIVE SERIES PADLOCKS

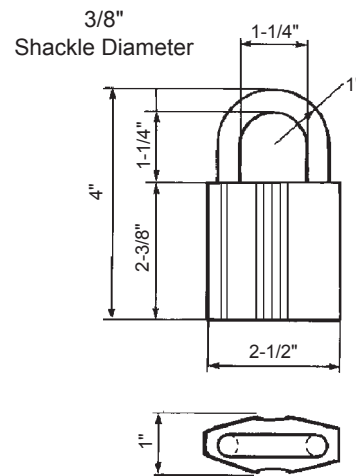
- Can be incorporated into any ASSA key system.
- All sub-assembled, no sidebar(SNS)
- For more information on ASSA, see previous page.
- Available in more restricted keyways, CALL FOR DETAILS.

#### KEY RETAINING PADLOCK

Rust-resistant case-hardened steel shackle. The locking mechanism has two case-hardened steel balls. No external rivets or screws. With weep holes for positive water drainage and protection from ice buildup.



Twin 6000 Item No.  
**65191B** (No. 2)  
**65191LB** 2-1/16" Extended Shackle



Twin 6000 Item No.  
**65391B** (No. 3)

SUPER SPECIAL PRICING AVAILABLE ON ITEMS MARKED WITH ■ - SUPPLIES LIMITED - PLEASE INQUIRE.

**465**v2  
(PL-44)